



Hanbury's Farm Newsletter

Growing and Succeeding Together

Monday
21st January
2019
Spring Term 1



HANBURYS FARM SCHOOL ATTENDANCE

Our whole school attendance expectation is 97% and over. Our whole school attendance for last week was 95.50% The winning year group was Year Reception. Their attendance was 98.90%. This is fantastic, Keep it up!



YOUNG VOICES

Last Friday, 18 of our pupils from Year 3 to Year 5 had the opportunity to participate in 'Young voices' at Resorts World Arena, Birmingham. Young Voices has staged the largest children's choir concerts in the world. Over 2 million children have taken part in Young Voices concerts. They believe passionately in inspiring the next generation to find their love for music.

Children from all over perform as a single choir to a sold-out audience of family and friends.

Our pupils performed in front of a few thousand people together with children from other schools.

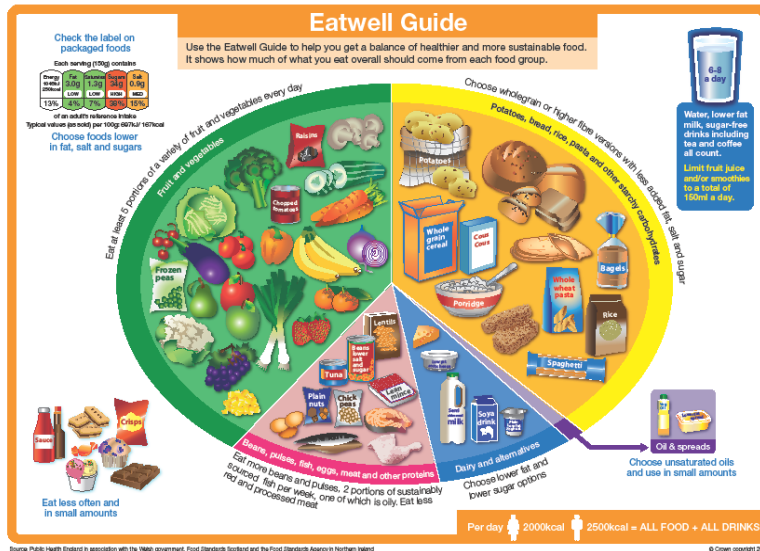
They have been learning their songs in choir club with Mrs Gregg over the last few months and were able to put it into practise on Friday. You should all be very proud of yourselves! Well done!

IMPORTANT - CHILDREN ARRIVING LATE FOR SCHOOL

Could parents/carers please be mindful that if you arrive late to school after the bell has gone at 8:55am, you **MUST** bring your child(ren) around to the school office so the office staff can sign them in.

This is for Health & Safety reasons and as a school, we have a duty of care to ensure children arrive at school safely.

Thank you for your continued support.



HEALTHY SNACKS IN SCHOOL

We encourage healthy eating in school. Help support us by sending your child in with healthy snacks at break and lunchtimes such as fruit, yoghurts, carrot/cucumber sticks, dried fruit such as sultanas or raisins.

Refer to the Eatwell Guide opposite for ideas on a balanced and healthy diet.

If you are stuck for ideas visit the change4life website www.change4life.co.uk where you'll find lots of ideas and recipes for snacks and lunchboxes. Ensure your child has their water bottle in school everyday. There is a water machine that they can fill their bottles up from during the day.

48 HOUR CLEARANCE FOR ILLNESS AND STOMACH BUGS

We have had an increase in school of children with upset tummies and sickness. Could we kindly remind parents/carers that if your child is ill due to sickness and diarrhoea, they **must be kept off school with a clearance of 48 hours** from their last bout of illness, before they return back to school. Thank you

ONCE A WEEK, TAKE A PEEK!



REMEMBER
ONCE A WEEK,
TAKE A PEEK

Unfortunately, head lice is a common problem in school. Please check your child's hair once a week. If head lice is detected, treat as soon as possible and check through the hair of any other family members. **Once your child's hair is treated, your child can be in school, they DO NOT need to have time off school for this.** For more information and advice visit www.onceaweektakeapeek.co.uk

Hanbury's Farm CP School, Derwent, Off Field Farm Rd, Belgrave, Tamworth, B77 2LD

01827 214005

office@hanburysfarm.staffs.sch.uk

www.hanburysfarm.staffs.sch.uk





DATES FOR YOUR DIARY 2019

Wednesday 23rd January - Netball competition at Rawlett High school 3:45pm

Friday 25th January - Zoo lab in school Rec - Year 5

Friday 15th February - School finishes today for half term holiday

HOLIDAY SCHOOL CLOSED - Monday 18th February - Friday 22nd February inclusive

Monday 25th February - SCHOOL CLOSED INSET DAY

Tuesday 26th February - Pupils return to school

Tuesday 26th February - Parents Consultation Evening (details to follow)

Wednesday 27th February - Parents Consultation Evening (details to follow)

Thursday 7th March - World Book day (details to follow)

Wednesday 13th March - Wonder dome day - Years 1 - 6

Friday 15th March - Red Nose day (details to follow)

Friday 12th April - School finishes today for the Easter holidays

HOLIDAY SCHOOL CLOSED - Monday 15th April - Friday 26th April inclusive

Monday 29th April - School re-opens for pupils

Monday 6th May - SCHOOL CLOSED MAY DAY BANK HOLIDAY

Monday 13th May - Year 6 SATS Exams commence

Wednesday 22nd/23rd/24th May - Laches Wood Residential trip

Friday 24th May - School finishes today for Whitsun half term holiday

HOLIDAY SCHOOL CLOSED - Monday 27th May - Friday 31st May inclusive

Monday 3rd June - SCHOOL CLOSED INSET DAY

Tuesday 4th June - School re-opens for pupil



SPECIAL MENTIONS

Reception - Scarlett - For her fantastic writing

- George - For his brilliant reading in phonics

Year 1 - Ocean - For her continued high standards in all areas

- Nate - For his super maths and wanting to challenge himself

Year 2 - Freya and Tiarna - For working really hard with their handwriting to get a pen

Year 3 - Amy - improved letter formation and using finger spaces

- Evie - For Her mature and hard working attitude

Year 4 - Athena - For settling into Year 4 and making friends

- Ethan - For working really hard on his plan for writing his own poem

Year 5 - Caitlin - For working really hard during maths and setting out her work really well

Year 6 - Mackenzie - For a great piece of writing, using short sentences for tension and impact

- Rhys - Excellent attitude in maths, multiplying and dividing fractions

WELL DONE TO ALL PUPILS WHO HAVE HAD A SPECIAL MENTION!

If you have any concerns regarding a child's welfare, you can contact Staffordshire First Response on 0800 131 3126 (out of hours 08456042886) or email firstr@staffordshire.gov.uk. Warwickshire Mash safeguarding team on 01926414144

(out of hours 01926886922) or email mash@warwickshire.gcsx.gov.uk