



# YEAR 5

*Growing and Succeeding Together*



Year 5 start at **8:45** via the KS2 doors, top main school gate. Doors will open at 8:45 daily.

Your finish time is **3:15pm** Via KS2 doors and exit the top main school gate. Parents are kindly asked to wait away from the classroom doors to minimise congregation or by the Year 5

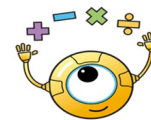


We know active, healthy children achieve more.



Just a reminder that PE is every **Wednesday**

Please remember to remove earrings/jewellery and send children with their water bottles wearing their outdoor PE kit, preferably a warm jacket/coat, scarf, hat and gloves due to the cold weather. During this time, we will utilise the outside space and spend these sessions out-



Weekly homework will be set and their new **Homework Books** will be handed out on a **Friday**, completing pages set by the class teacher and this will be expected to be returned on **Wednesdays**. If they struggle with this, please advise children to have a go put I can support them in school.

Children will also be expected to access their **Google Classroom**, **BGfL**, **Reading Plus**, **TT Rock Star** and **Maths Flex** accounts from home on a weekly basis when directed by the teacher to do so using their logins card provided. These websites the school subscribes to engage and extend children's understanding further outside of school.



**Reading Plus** will now also run alongside **home reading books and journals**, so please ensure children bring their reading books to school daily and these will be expected to



In Science, we will be covering the topic Properties of Materials this half term.



In History, we will be covering the Anglo

Year 5 walk up to TEC High School for their **swimming sessions on a Tuesday afternoon**. Just to inform you of this so children can be aware and prepared for this as they will need to wear their swimming kit underneath their uniform as well as bringing with them a towel and swimming hat for this session - also please remember to re-

